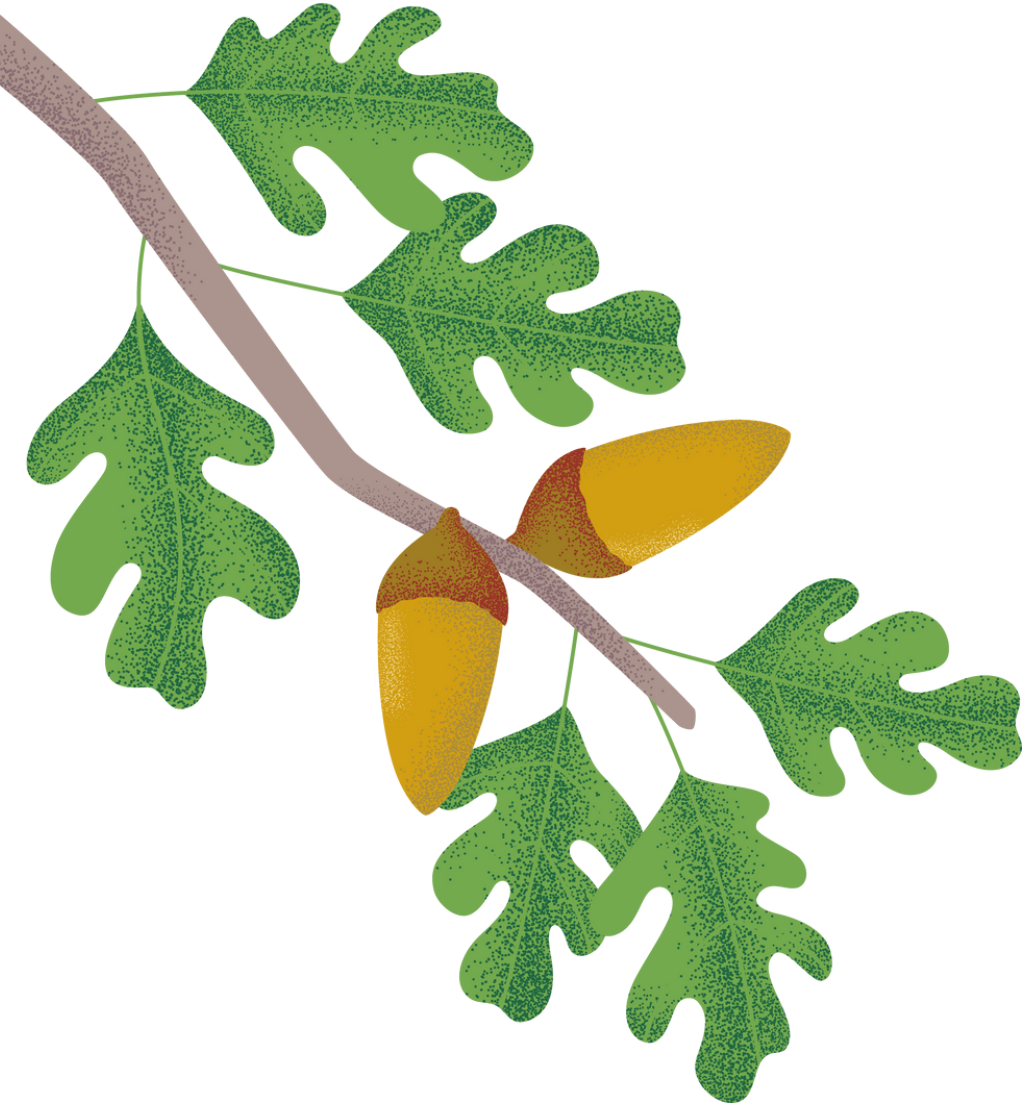


Yard Trees in Huntington Park

Selecting the right tree for your yard is important for its long-term health and aesthetic appeal. To help with this, we have adapted [a list from City Plants](#) of small, medium, and large trees at maturity that are best suited for residential yards.



Deciduous/Evergreen: Deciduous trees shed their leaves seasonally, while evergreen trees retain their leaves year-round.

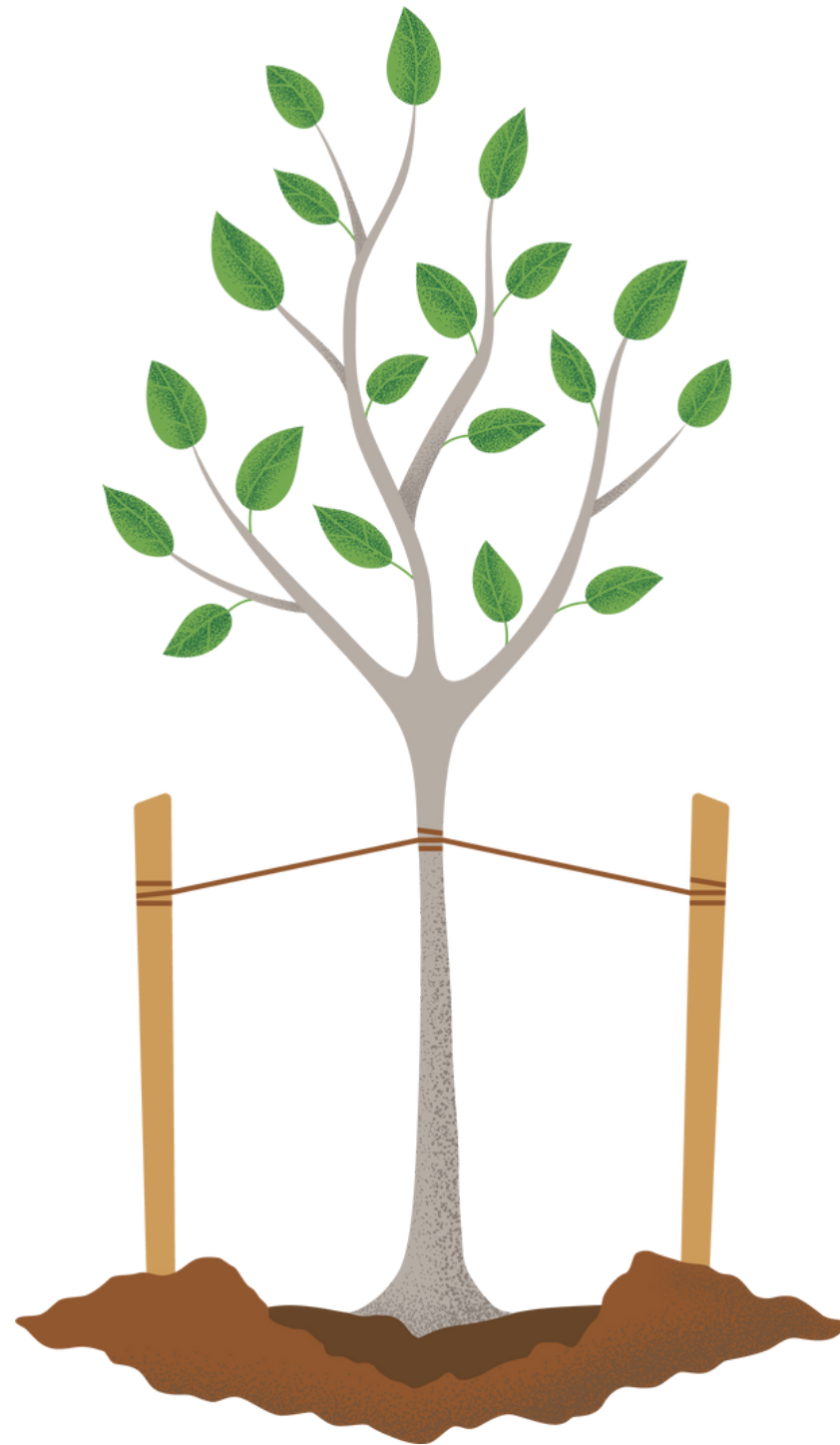
Size: Canopy Width x Maximum Height indicates the typical size range of the tree when mature.

Water use: Describes the tree's water needs.

Sun: Specifies the amount of sunlight the tree prefers.

Growth Rate: Indicates the average growth rate of the tree per year.

Defining Characteristics: Unique features or attributes that set the tree apart.



Small Trees

Small trees offer a touch of charm to your surroundings. Their modest size makes them perfect for providing just the right amount of shade without overpowering the space.

AFRICAN SUMAC

Searsia lancea



More Info

Evergreen
20-35 x 30 feet
Very Low Water Use
Partial Shade to Full Sun
Grows ~24 in/year
Great screen tree, inconspicuous
flowers in summer.

BRONZE LOQUAT

Eriobotrya deflexa



More Info

Evergreen
15-25 x 25 feet
Medium Water Use
Partial Shade to Full Sun
Grows ~36 in/year
White flowers in spring and produces
non-edible fruit.

CALIFORNIA BUCKEYE

Aesculus californica



More Info

Deciduous
20-30 x 25 feet
Low Water Use
Partial Shade to Full Sun
Grows ~24 in/year
White/pale pink flowers in spring.

CRAPE MYRTLE

Lagerstroemia indica



More Info

Deciduous
25 x 25 feet
Low Water Use
Full Sun
Grows ~24 in/year
Lavender, pink, red, or white flowers
in summer.

DESERT WILLOW

Chilopsis linearis



More Info

Deciduous
10-20 x 30 feet
Very Low Water Use
Partial Shade to Full Sun
Grows ~24-36 in/year
Trumpet shaped flowers in summer.

EASTERN REDBUD

Cercis canadensis



More Info

Deciduous
25-35 x 40 feet
Medium Water Use
Partial Shade to Full Sun
Grows ~36 in/year
Pink or rose flowers in spring.

FRASER PHOTINIA

Photinia x fraseri



More Info

Evergreen
8-12 x 30 feet
Medium Water Use
Partial Shade to Full Sun
Grows ~24-36 in/year
Clusters of small white flowers and
red berries in spring.

GOLD MEDALLION TREE

Cassia leptophylla



More Info

Evergreen
30 x 25 feet
Medium Water Use
Full Sun
Grows ~36 in/year
Yellow flowers in summer.

HOLLYLEAF CHERRY

Prunus ilicifolia



More Info

Evergreen
10-25 x 30 feet
Low Water Use
Partial Shade to Full Sun
Grows ~24 in/year
White flowers in spring and small red
berries.

PURPLE ORCHID TREE

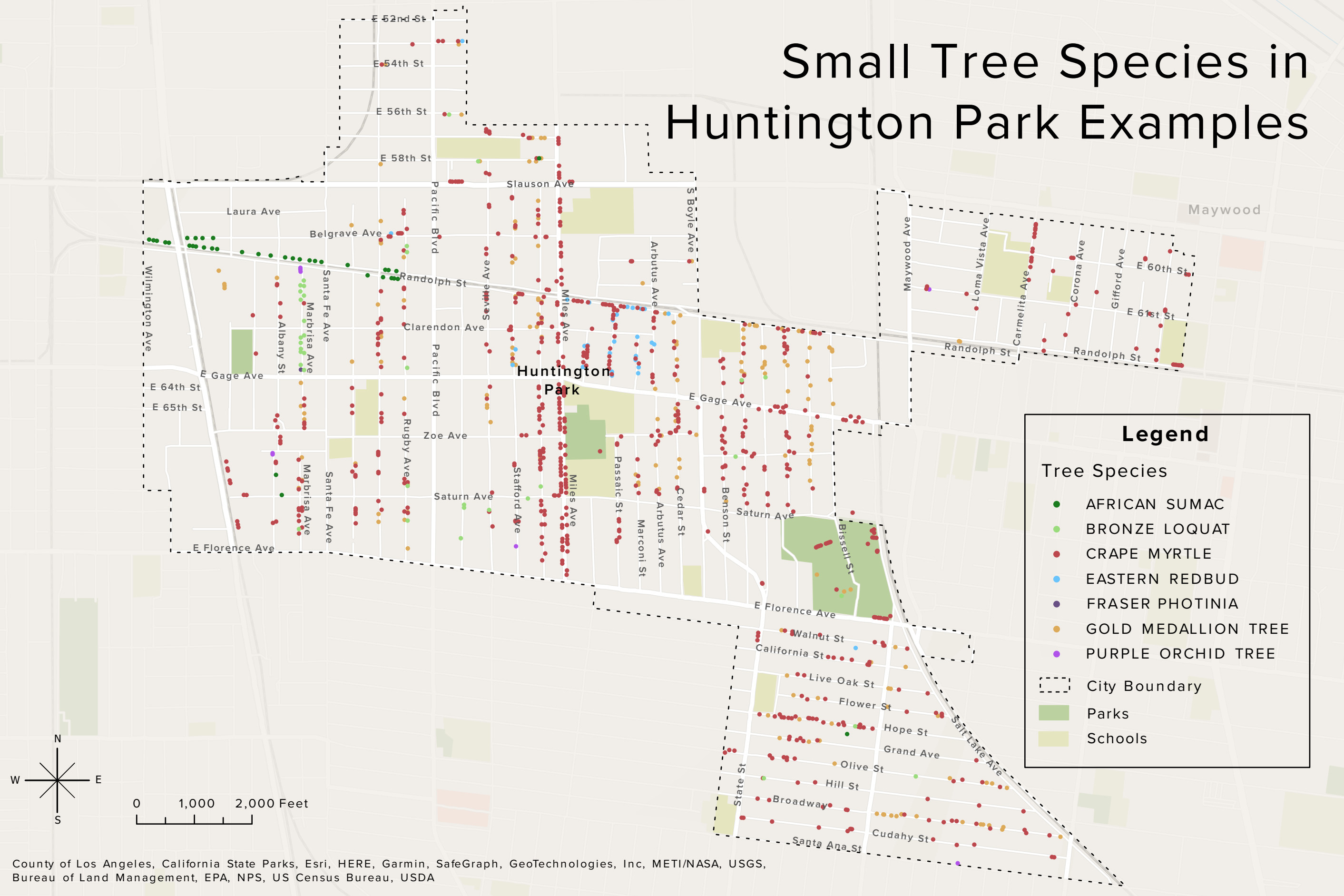
Bauhinia variegata

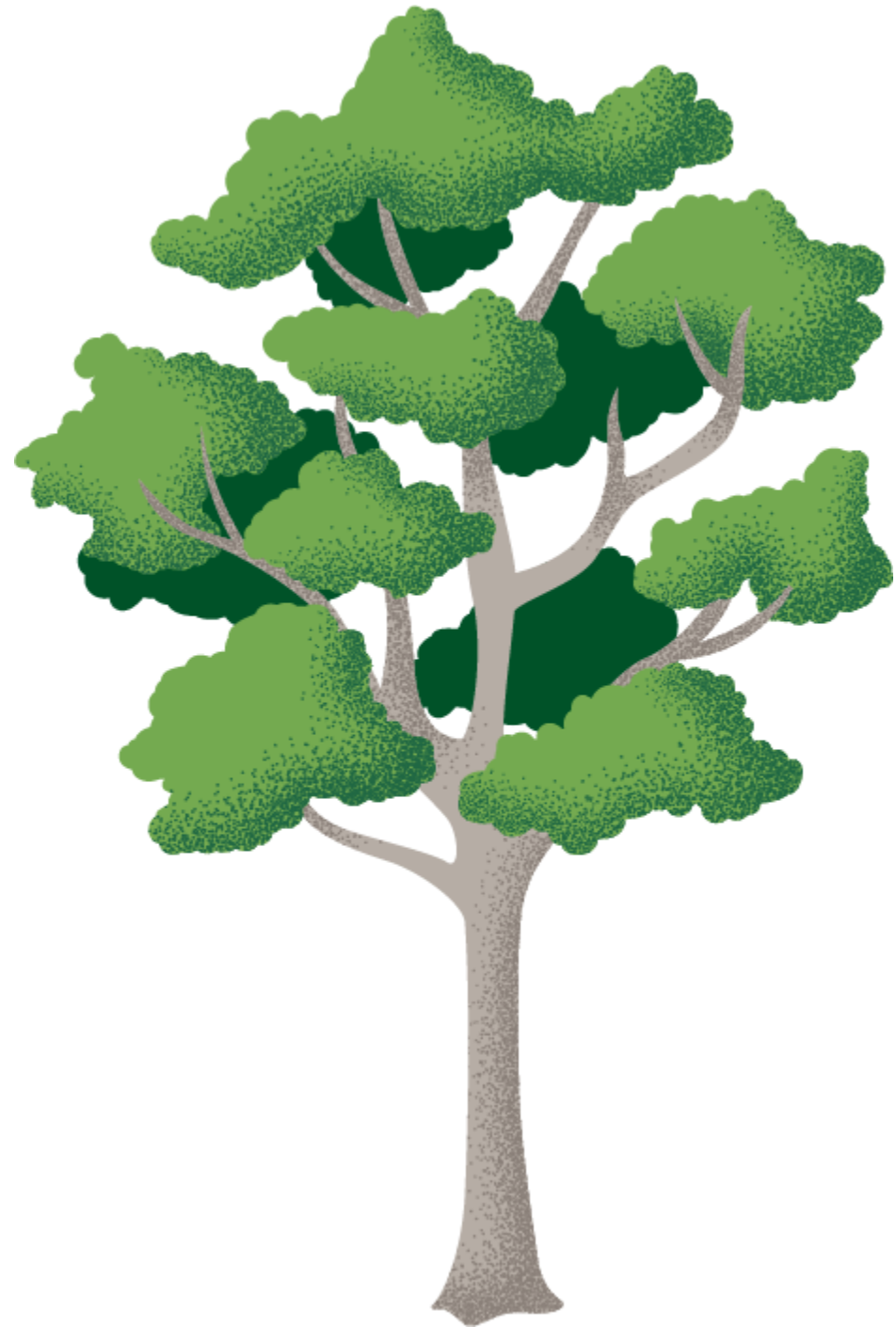


More Info

Deciduous
20-35 x 35 feet
Medium Water Use
Partial Shade to Full Sun
Grows ~12-24 in/year
Fragrant, lavender/pink flowers in
spring or winter.

Small Tree Species in Huntington Park Examples





Medium Trees

Medium-sized trees form a canopy that provides a comfortable and inviting environment. They offer a moderate amount of shade, perfect for creating a relaxing outdoor setting.

AFGHAN PINE

Pinus eldarica



More Info

Evergreen
15-25 x 80 feet
Low Water Use
Partial Shade to Full Sun
Grows ~36 in/year
Drought resistant. Thrives in hot dry climates and poor soils.

AUSTRALIAN WILLOW

Geijera parviflora



More Info

Evergreen
20 x 45 feet
Medium Water Use
Partial Shade to Full Sun
Grows ~24-36 in/year
Inconspicuous flowers in spring or fall.

CALIFORNIA BAY

Umbellularia californica



More Info

Evergreen
60-75 x 80 feet
High Water Use
Full Shade to Full Sun
Grows ~12-24 in/year
Yellow/green flowers from December to April.

CAROLINA LAUREL CHERRY

Prunus caroliniana



More Info

Evergreen
15-25 x 30 feet
Medium Water Use
Partial Shade to Full Sun
Grows ~36 in/year
Shiny green foliage, withstands heat, dryness and wind.

CHINESE FLAME TREE

Koelreuteria bipinnata



More Info

Deciduous
15-30 x 40 feet
Medium Water Use
Partial Shade to Full Sun
Grows ~12-24 in/year
Yellow flowers in summer or fall.

CHINESE PISTACHE

Pistacia chinensis



More Info

Deciduous
25-35 x 40 feet
Low Water Use
Partial Shade to Full Sun
Grows ~24 in/year
Flowers in spring, has fragrant leaf.

CORK OAK

Quercus suber



More Info

Evergreen
70 x 70 feet
Medium Water Use
Partial Shade to Full Sun
Grows ~24-36 in/year
Long-lived (up to 250 years), twisted branches and downy twigs.

MESQUITE

Prosopis glandulosa var. torreyana



More Info

Deciduous
25-35 x 40 feet
Very Low Water Use
Full Sun
Grows ~12-24 in/year
Clusters of greenish-yellow flowers from spring until summer.

OLIVE TREE

Olea europaea



More Info

Evergreen
25-30 x 30 feet
Low Water Use
Partial Shade to Full Sun
Grows ~12-24 in/year
Inconspicuous, fragrant flowers in spring.

PEPPERMINT TREE

Agonis flexuosa



More Info

Evergreen
15-30 x 35 feet
Low Water Use
Partial Shade to Full Sun
Grows ~24-36 in/year
Showy, white flowers in spring or summer.

PINK TRUMPET

Handroanthus heptaphyllus



More Info

Evergreen

15-25 x 30 feet

Medium Water Use

Full Sun

Grows ~12-24 in/year

Pink flowers in spring or summer.

SILK TREE

Albizia julibrissin



More Info

Deciduous

20 x 35 feet

Medium Water Use

Partial Shade to Full Sun

Grows ~36 in/year

Pink or rose flowers in spring or summer.

SWEET BAY

Laurus nobilis



More Info

Evergreen

15-30 x 40 feet

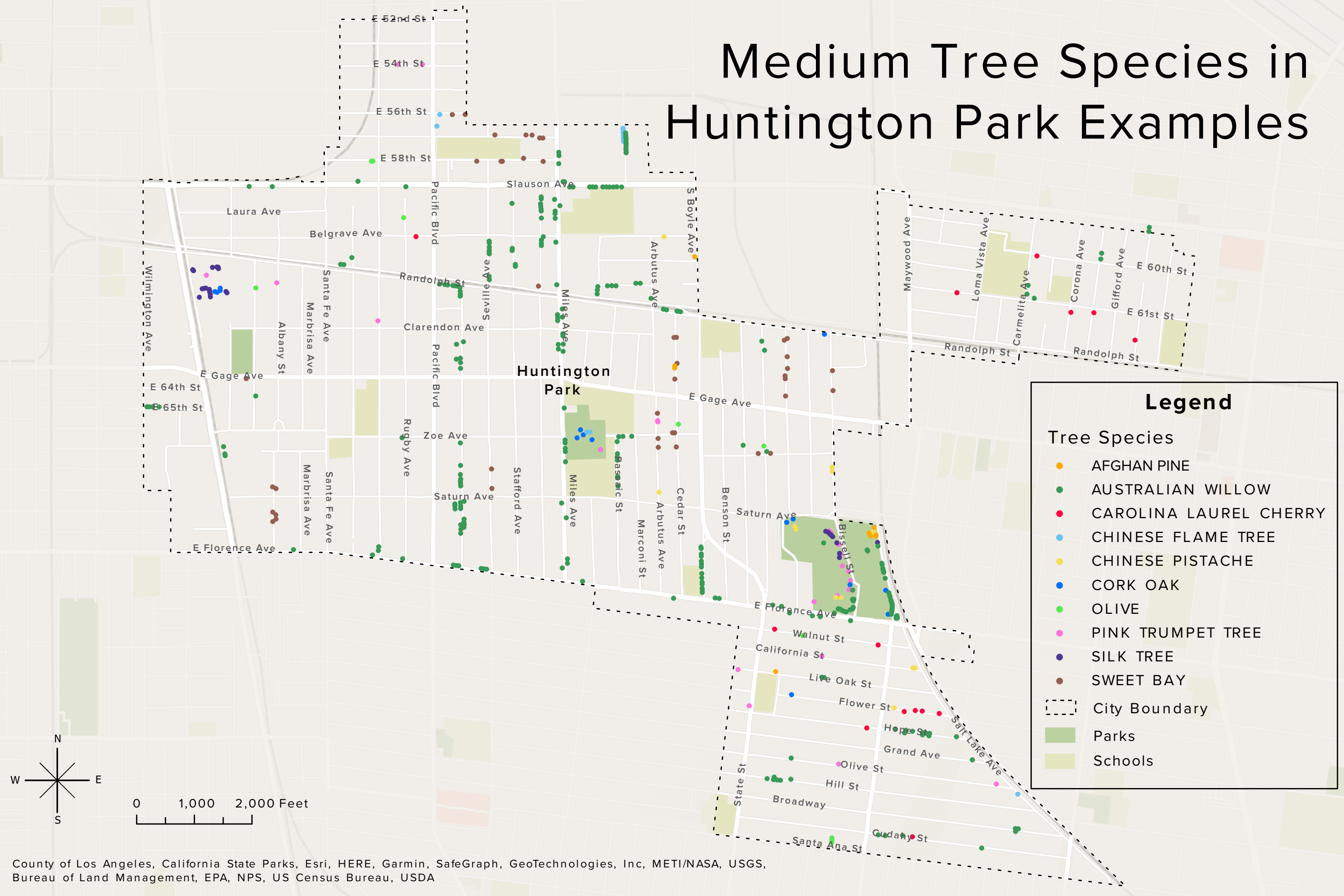
Medium Water Use

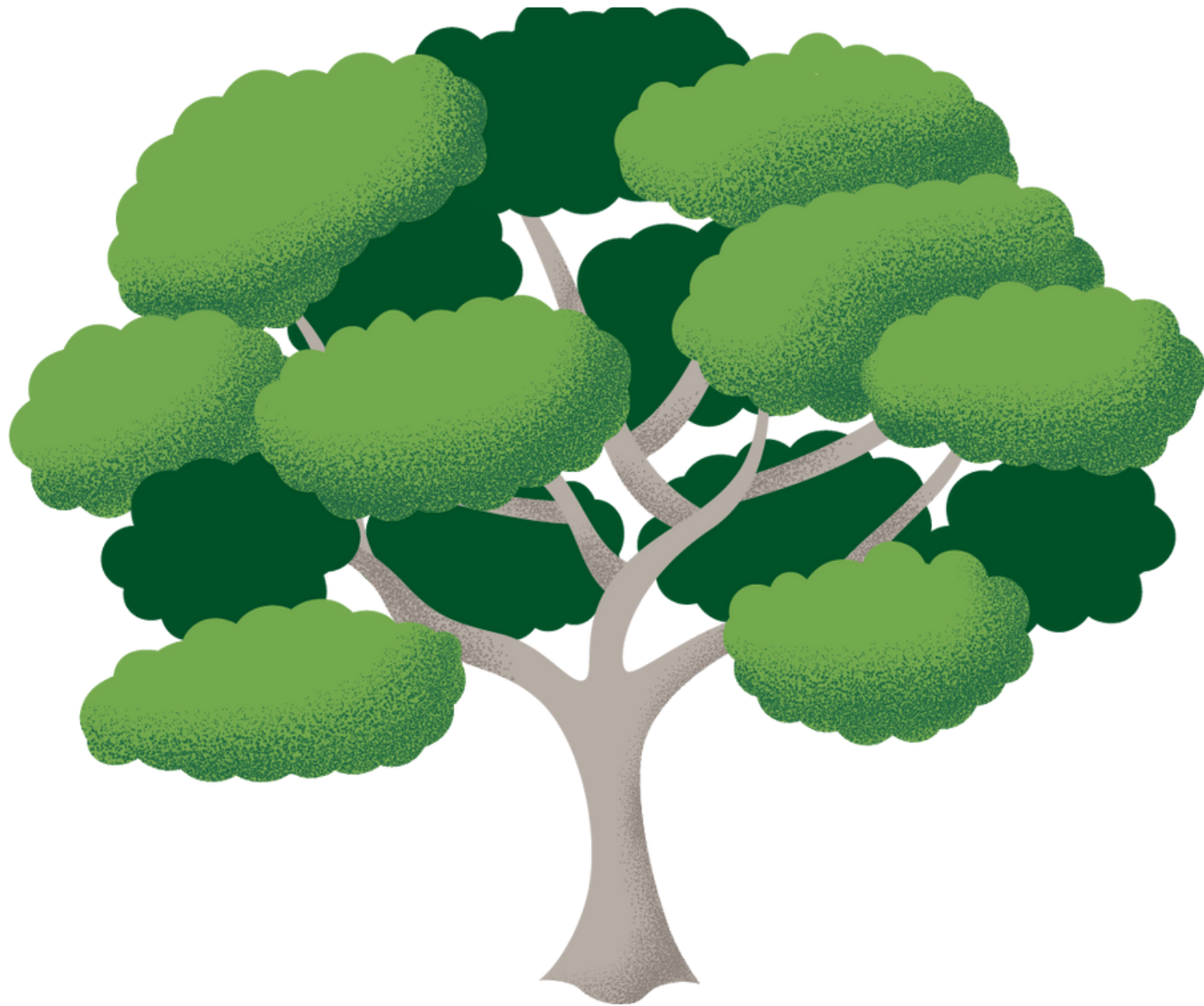
Partial Shade to Full Sun

Grows ~12-24 in/year

Green, white or yellow flowers in spring; leaves can be used in cooking.

Medium Tree Species in Huntington Park Examples





Large Trees

Large trees provide abundant shade, establishing a cool and refreshing environment. With their substantial size, they create expansive canopies and offer ample shade for larger outdoor areas.

AFRICAN FERN PINE

Afrocarpus falcatus



More Info

Evergreen
25-35 x 70 feet
Medium Water Use
Partial Shade to Full Sun
Grows ~12-36 in/year
Dense canopy, great for screens.

ALEPPO PINE

Pinus halepensis



More Info

Evergreen
20-40 x 60 feet
Medium Water Use
Partial Shade to Full Sun
Grows ~24-36 in/year
Long living pine, great for shade.

BRISBANE BOX

Lophostemon confertus



More Info

Evergreen
10-30 x 50 feet
Medium Water Use
Partial Shade to Full Sun
Grows ~24-36 in/year
White flowers in spring.

CANARY ISLAND PINE

Pinus canariensis



More Info

Evergreen
20-35 x 80 feet
Medium Water Use
Partial Shade to Full Sun
Grows ~36 in/year
Tall pine, with billowy dark-green boughs.

COAST LIVE OAK

Quercus agrifolia



More Info

Evergreen
20-70 x 70 feet
Low Water Use
Partial Shade to Full Sun
Grows ~24 in/year
Long living oak; large, spreading canopy.

DEODAR CEDAR

Cedrus deodara



More Info

Evergreen
20-30 x 60 feet
Medium Water Use
Partial Shade to Full Sun
Grows ~36 in/year
Inconspicuous flowers in fall.

DRAKE CHINESE ELM

Ulmus parvifolia 'Drake'



More Info

Evergreen, partly Deciduous
35-50 x 45 feet
Medium Water Use
Partial Shade to Full Sun
Grows ~36 in/year
Flowers in summer or fall.

ITALIAN STONE PINE

Pinus pinea



More Info

Evergreen
40-60 x 80 feet
Medium Water Use
Partial Shade to Full Sun
Grows ~24-36 in/year
Open, spreading shade tree.

JACARANDA

Jacaranda mimosifolia



More Info

Deciduous
15-30 x 50 feet
Medium Water Use
Full Sun
Grows ~36 in/year
Blue or lavender flowers in spring, summer or fall.

TIPU TREE

Tipuana tipu



More Info

Deciduous
25-50 x 50 feet
Medium Water Use
Partial Shade to Full Sun
Grows ~24-36 in/year
Orange or yellow flowers in summer.

VALLEY OAK

Quercus lobata



More Info

Deciduous

50 x 70 feet

Medium Water Use

Partial Shade to Full Sun

Grows ~24-36 in/year

Thick furrowed bark, and produces sizable acorns.

VIRGINIA OAK

Quercus virginiana



More Info

Evergreen

60-100 x 80 feet

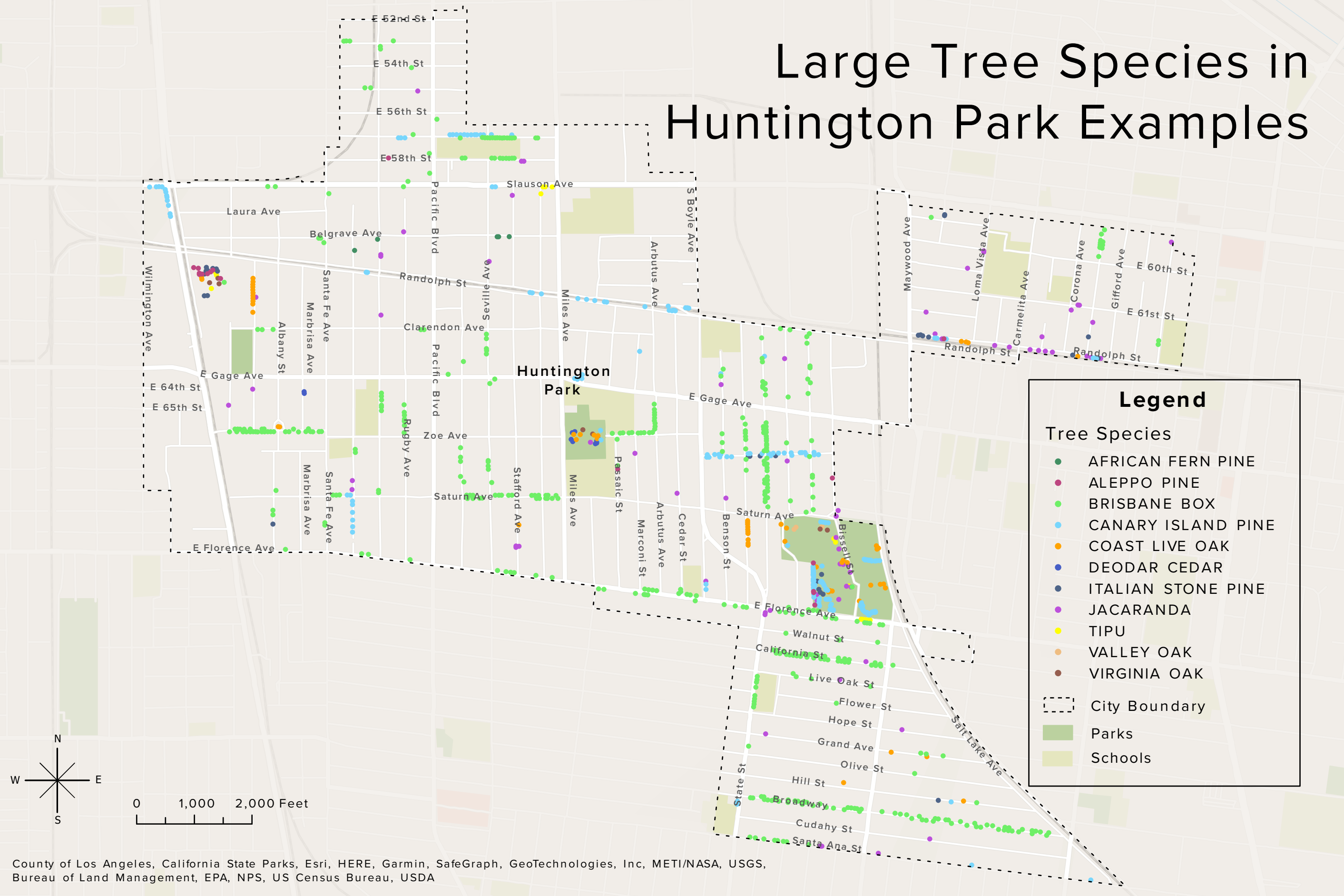
Medium Water Use

Partial Shade to Full Sun

Grows ~24-36 in/year

sprawling and wide-spreading canopy.

Large Tree Species in Huntington Park Examples



Legend

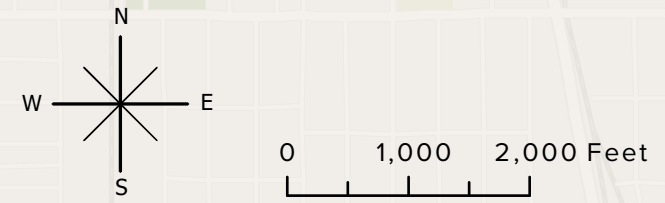
Tree Species

- AFRICAN FERN PINE
- ALEPPO PINE
- BRISBANE BOX
- CANARY ISLAND PINE
- COAST LIVE OAK
- DEODAR CEDAR
- ITALIAN STONE PINE
- JACARANDA
- TIPU
- VALLEY OAK
- VIRGINIA OAK

--- City Boundary

■ Parks

■ Schools



Fruit Trees

It is recommended to plant fruit trees in the winter or early spring, as this allows the trees to establish their roots before the summer heat sets in. When selecting a planting location, choose a spot that receives adequate sunlight and has well-draining soil. Regular watering is also important for healthy fruit tree growth, especially during the hot summer months.

Deciduous/Evergreen: Deciduous trees shed their leaves seasonally, while evergreen trees retain their leaves year-round.

Size: Canopy Width x Height indicates the typical size range of the tree when mature.

Water use: Describes the tree's water needs.

Sun: Specifies the amount of sunlight the tree prefers.

Growth Rate: Indicates the average growth rate of the tree per year.

Fruit-Bearing Season: Refers to the time of year when the tree produces fruit.

APPLE

Malus spp.



More Info

Deciduous
20-25 x 40 feet
Medium Water Use
Full Sun
Grows ~24-36 in/year
Fruit in Fall or Summer

APRICOT

Prunus armeniaca



More Info

Deciduous
10-20 x 30 feet
Medium Water Use
Full Sun
Grows ~24 in/year
Fruit in Spring or Summer

AVOCADO

Persea americana



More Info

Evergreen
25-35 x 40 feet
Medium Water Use
Partial Shade to Full Sun
Grows ~24-36 in/year
Fruit in Spring or Summer

CHERRY PLUM

Prunus cerasifera



More Info

Deciduous
15-20 x 25 feet
Medium Water Use
Full Sun
Grows ~24-36 in/year
Fruit in Summer

COMMON FIG

Ficus carica



More Info

Deciduous
10-20 x 30 feet
Medium Water Use
Partial Shade to Full Sun
Grows ~36 in/year
Fruit in Fall or Summer

COMMON PLUM

Prunus domestica



More Info

Deciduous
10-15 x 15 feet
Medium Water Use
Full Sun
Grows ~24 in/year
Fruit in Summer

GUAVA

Psidium guajava



More Info

Evergreen
20-25 x 25 feet
Medium Water Use
Partial Shade to Full Sun
Grows ~24 in/year
Fruit in Summer

LEMON*

Citrus limon



More Info

Evergreen
5-10 x 25 feet
Medium Water Use
Full Sun
Grows ~24 in/year
Fruit in Fall, Winter, Spring or Summer

LOQUAT

Eriobotrya japonica



More Info

Evergreen
15-30 x 30 feet
Medium Water use
Partial Shade to Full Sun
Grows ~36 in/year
Fruit in Spring or Summer

ORANGE*

Citrus sinensis



More Info

Evergreen
15-25 x 30 feet
Medium Water Use
Full Sun
Grows ~24 in/year
Fruit in Fall, Winter, Spring, or Summer

PEACH

Prunus persica



More Info

Deciduous
25 x 25 feet
Medium Water Use
Full Sun
Grows ~36 in/year
Fruit in Spring or Summer

PEAR

Pyrus calleryana



More Info

Evergreen
50 x 50 feet
Medium Water Use
Full Sun
Grows ~24 in/year
Fruit in Summer

POMEGRANATE

Punica granatum



More Info

Evergreen
15 x 15 feet
Medium Water use
Partial Shade to Full Sun
Grows ~24 in/year
Fruit in Fall

TANGOR*

Citrus reticulata x sinensis



Evergreen
15-25 x 30 feet
Medium Water Use
Full Sun
Grows ~24 in/year
Fruit in Winter or Spring

*As of 07/2023 there is an active quarantine for citrus species in Huntington Park. For more information and the latest updates visit the [Citrus Insider Page](#).

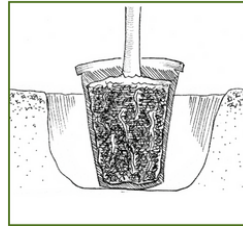
How to Plant Your New Tree!

Planting

1. Clear the area of weeds and grass.

2. Dig a hole.

Measure the height of the root ball (where the trunk meets the soil) and dig a hole as deep as the height of the root ball, and two to three times the width.

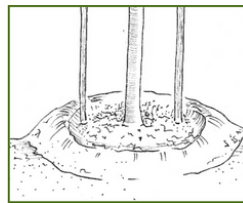


3. Place the tree.

Carefully remove the tree from the pot to avoid damaging the root ball. Place the tree in the hole and ensure that the top of the root ball is level or 1" above ground. Gently massage the roots.

4. Backfill around the root ball.

Tamp the soil as you backfill to eliminate air pockets. When backfilling is complete, the root ball should be at the level of the soil or 1" above ground.



5. Build a watering berm (a low ring of dirt around the tree).

Build the berm about 6 inches high, outside the root ball perimeter.



6. Water the tree.

Slowly water the tree with a hose or bucket. Give the tree 15-20 gallons of water.

7. Mulch (optional).

Place a 3-inch layer of mulch around the tree to help control weeds and prevent evaporation. Push the mulch 5-6 inches away from the base of the trunk, because the trunk will rot if covered.

Tools

- Shovel
- Water (hose or bucket)
- Gloves (optional)
- Mulch (optional)
- Stakes and Ties (optional)



Watering

Give your tree 10-15 gallons of water once a week to help your tree survive its first 3 years. Sprinklers are not enough! Check to see if the soil at a depth of 2-3 inches to see if it is dry. If it is, fill a 5-gallon bucket of water and gently pour into the tree berm 2-3 times.



Staking

1. Remove nursery stake.

When the tree is large enough, remove the stake that is tied against the trunk. Fill the hole with soil.

2. Stake the tree if it cannot support itself.

Place larger stakes on the opposite sides of the tree. Ensure the stakes don't rub on any major branches. Pound stakes into the ground so they are sturdy. Use flexible ties to secure the tree to the stakes.