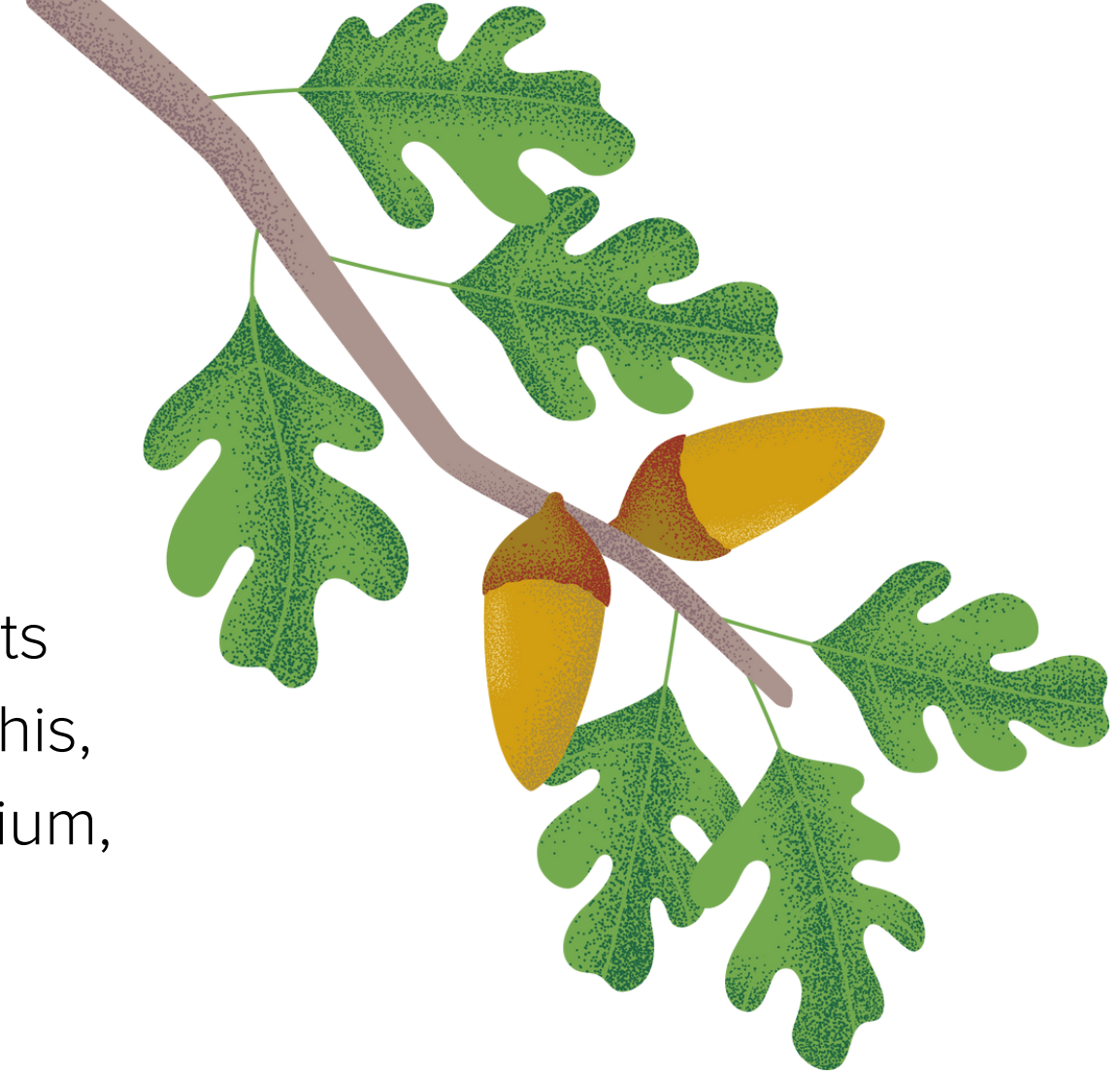


# Yard Trees in Paramount

Selecting the right tree for your yard is important for its long-term health and aesthetic appeal. To help with this, we have adapted [a list from City Plants](#) of small, medium, and large trees at maturity that are best suited for residential yards.



Deciduous/Evergreen: Deciduous trees shed their leaves seasonally, while evergreen trees retain their leaves year-round.

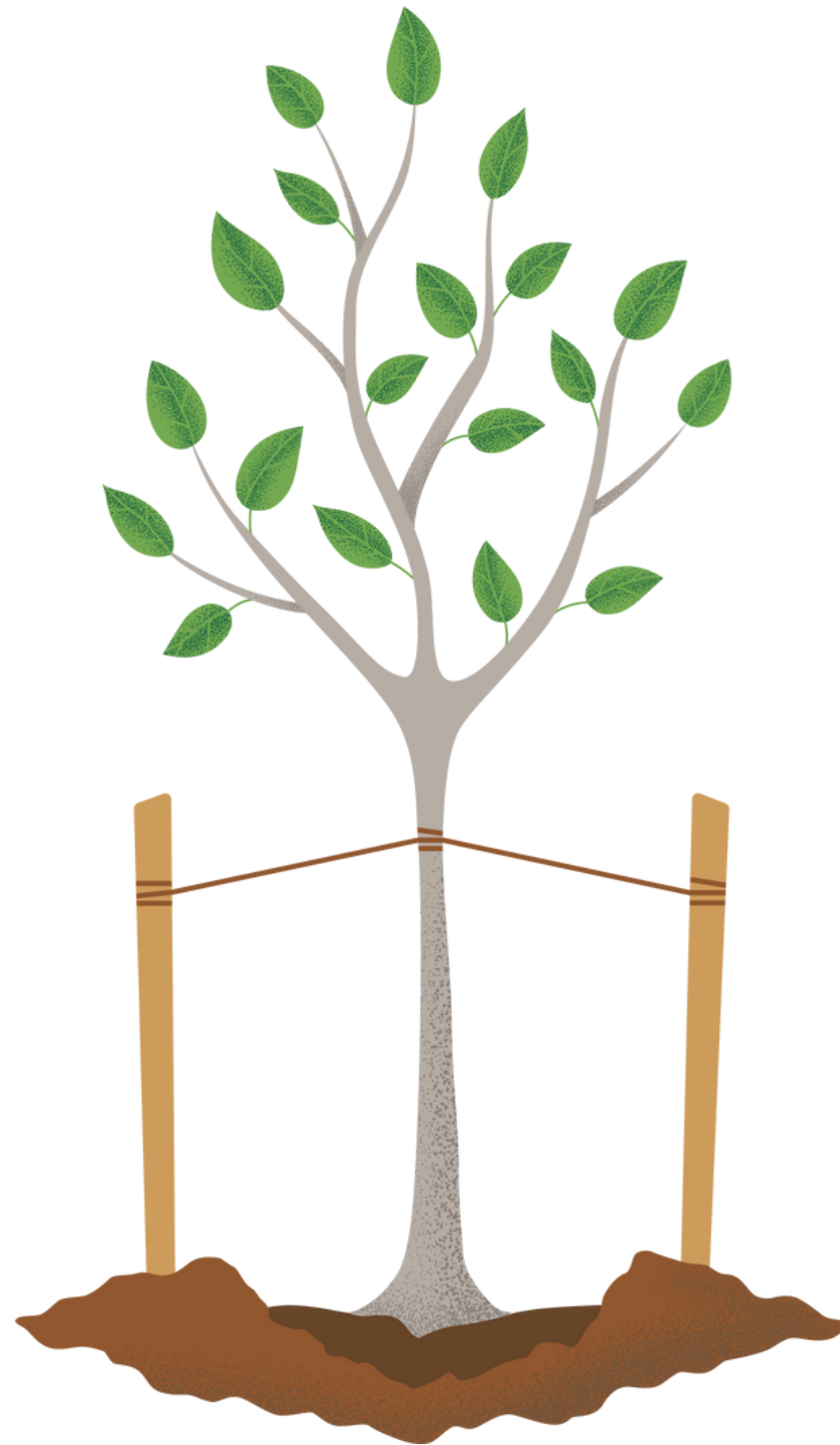
Size: Canopy Width x Maximum Height indicates the typical size range of the tree when mature.

Water use: Describes the tree's water needs.

Sun: Specifies the amount of sunlight the tree prefers.

Growth Rate: Indicates the average growth rate of the tree per year.

Defining Characteristics: Unique features or attributes that set the tree apart.



# Small Trees

Small trees offer a touch of charm to your surroundings. Their modest size makes them perfect for providing just the right amount of shade without overpowering the space.



## AFRICAN SUMAC

*Searsia lancea*



More Info

Evergreen  
20-35 x 30 feet  
Very Low Water Use  
Partial Shade to Full Sun  
Grows ~24 in/year  
Great screen tree, inconspicuous  
flowers in summer.

## BRONZE LOQUAT

*Eriobotrya deflexa*



More Info

Evergreen  
15-25 x 25 feet  
Medium Water Use  
Partial Shade to Full Sun  
Grows ~36 in/year  
White flowers in spring and produces  
non-edible fruit.

## CALIFORNIA BUCKEYE

*Aesculus californica*



More Info

Deciduous  
20-30 x 25 feet  
Low Water Use  
Partial Shade to Full Sun  
Grows ~24 in/year  
White/pale pink flowers in spring.

## CRAPE MYRTLE

*Lagerstroemia indica*



More Info

Deciduous  
25 x 25 feet  
Low Water Use  
Full Sun  
Grows ~24 in/year  
Lavender, pink, red, or white flowers  
in summer.

## DESERT WILLOW

*Chilopsis linearis*



More Info

Deciduous  
10-20 x 30 feet  
Very Low Water Use  
Partial Shade to Full Sun  
Grows ~24-36 in/year  
Trumpet shaped flowers in summer.

## EASTERN REDBUD

*Cercis canadensis*



More Info

Deciduous  
25-35 x 40 feet  
Medium Water Use  
Partial Shade to Full Sun  
Grows ~36 in/year  
Pink or rose flowers in spring.

## FRASER PHOTINIA

*Photinia x fraseri*



More Info

Evergreen  
8-12 x 30 feet  
Medium Water Use  
Partial Shade to Full Sun  
Grows ~24-36 in/year  
Clusters of small white flowers and  
red berries in spring.

## GOLD MEDALLION TREE

*Cassia leptophylla*



More Info

Evergreen  
30 x 25 feet  
Medium Water Use  
Full Sun  
Grows ~36 in/year  
Yellow flowers in summer.

## HOLLYLEAF CHERRY

*Prunus ilicifolia*



More Info

Evergreen  
10-25 x 30 feet  
Low Water Use  
Partial Shade to Full Sun  
Grows ~24 in/year  
White flowers in spring and small red  
berries.

## PURPLE ORCHID TREE

*Bauhinia variegata*

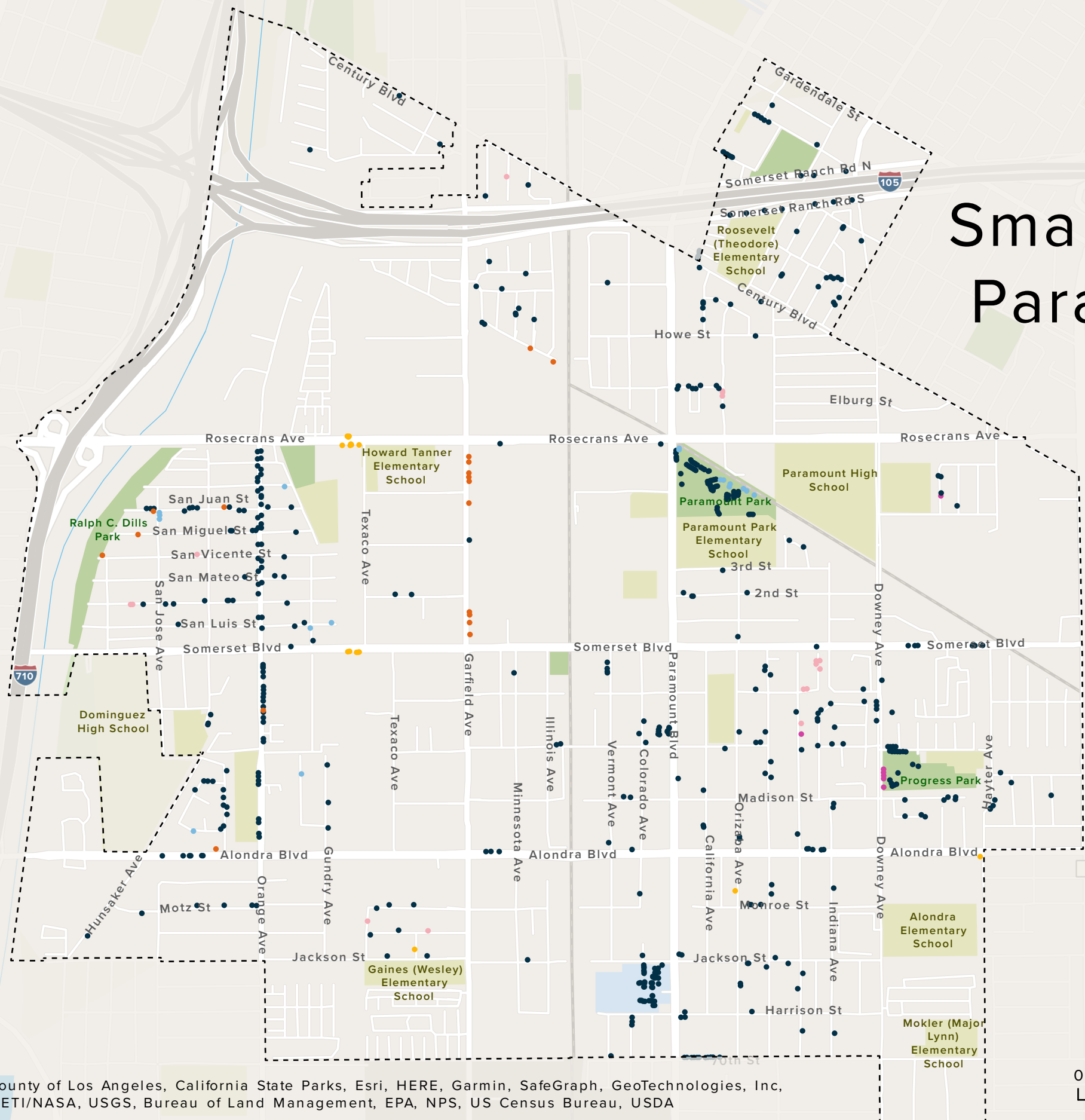


More Info

Deciduous  
20-35 x 35 feet  
Medium Water Use  
Partial Shade to Full Sun  
Grows ~12-24 in/year  
Fragrant, lavender/pink flowers in  
spring or winter.



# Small Tree Species in Paramount Examples



### Legend

**Tree Species**

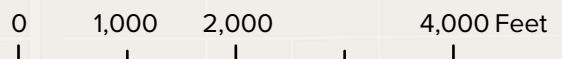
- AFRICAN SUMAC
- BRONZE LOQUAT
- CRAPE MYRTLE
- EASTERN REDBUD
- GOLD MEDALLION TREE
- PURPLE ORCHID TREE

Paramount City Boundary

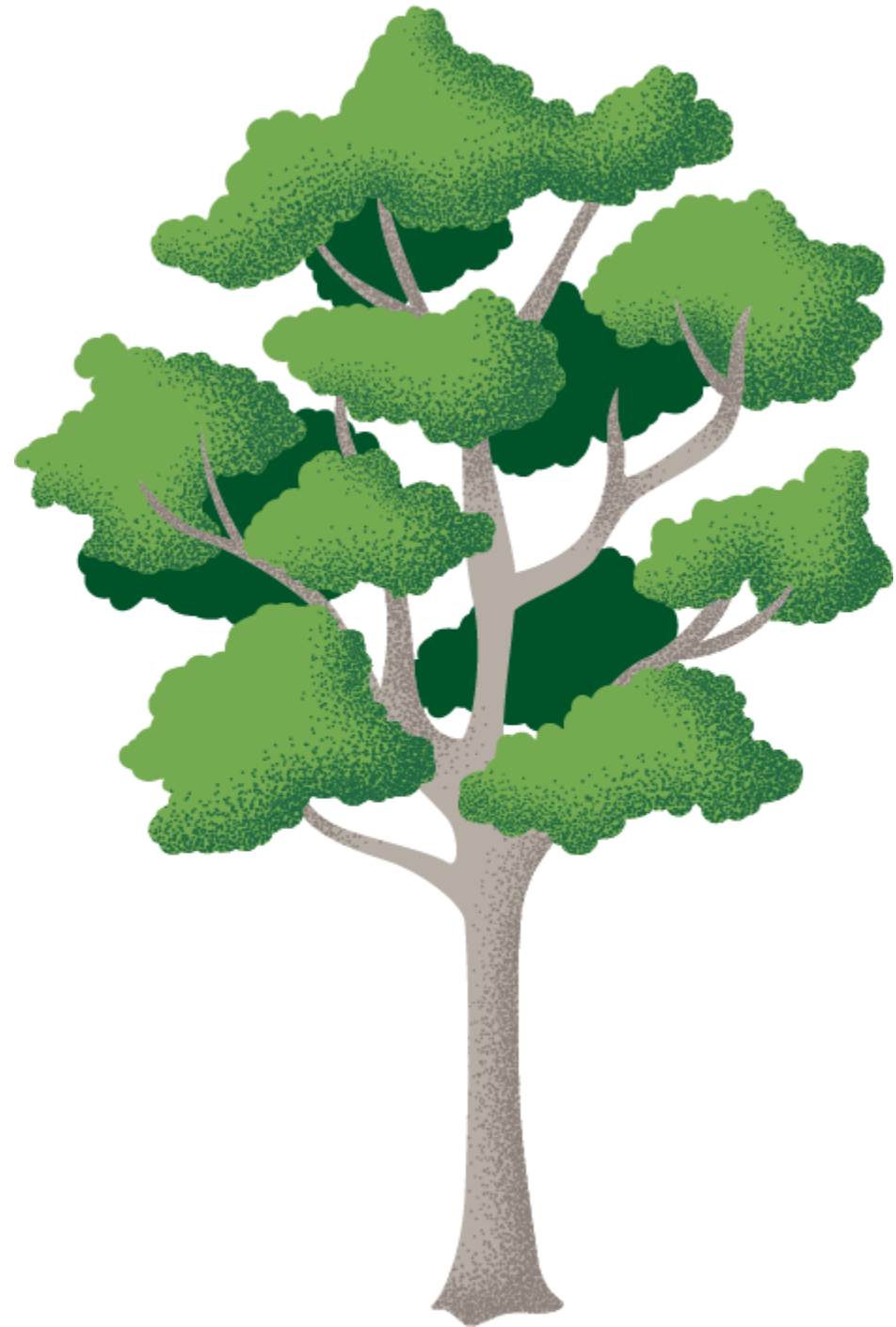
Paramount City Hall

Parks

Schools







# Medium Trees

Medium-sized trees form a canopy that provides a comfortable and inviting environment. They offer a moderate amount of shade, perfect for creating a relaxing outdoor setting.



## AFGHAN PINE

*Pinus eldarica*



More Info

Evergreen  
15-25 x 80 feet  
Low Water Use  
Partial Shade to Full Sun  
Grows ~36 in/year  
Drought resistant. Thrives in hot dry climates and poor soils.

## AUSTRALIAN WILLOW

*Geijera parviflora*



More Info

Evergreen  
20 x 45 feet  
Medium Water Use  
Partial Shade to Full Sun  
Grows ~24-36 in/year  
Inconspicuous flowers in spring or fall.

## CALIFORNIA BAY

*Umbellularia californica*



More Info

Evergreen  
60-75 x 80 feet  
High Water Use  
Full Shade to Full Sun  
Grows ~12-24 in/year  
Yellow/green flowers from December to April.

## CAROLINA LAUREL CHERRY

*Prunus caroliniana*



More Info

Evergreen  
15-25 x 30 feet  
Medium Water Use  
Partial Shade to Full Sun  
Grows ~36 in/year  
Shiny green foliage, withstands heat, dryness and wind.

## CHINESE FLAME TREE

*Koelreuteria bipinnata*



More Info

Deciduous  
15-30 x 40 feet  
Medium Water Use  
Partial Shade to Full Sun  
Grows ~12-24 in/year  
Yellow flowers in summer or fall.

## CHINESE PISTACHE

*Cercis canadensis*



More Info

Deciduous  
25-35 x 40 feet  
Low Water Use  
Partial Shade to Full Sun  
Grows ~24 in/year  
Flowers in spring, has fragrant leaf.

## CORK OAK

*Quercus suber*



More Info

Evergreen  
70 x 70 feet  
Medium Water Use  
Partial Shade to Full Sun  
Grows ~24-36 in/year  
Long-lived (up to 250 years), twisted branches and downy twigs.

## MESQUITE

*Prosopis glandulosa var. torreyana*



More Info

Deciduous  
25-35 x 40 feet  
Very Low Water Use  
Full Sun  
Grows ~12-24 in/year  
Clusters of greenish-yellow flowers from spring until summer.

## OLIVE TREE

*Olea europaea*



More Info

Evergreen  
25-30 x 30 feet  
Low Water Use  
Partial Shade to Full Sun  
Grows ~12-24 in/year  
Inconspicuous, fragrant flowers in spring.

## PEPPERMINT TREE

*Agonis flexuosa*



More Info

Evergreen  
15-30 x 35 feet  
Low Water Use  
Partial Shade to Full Sun  
Grows ~24-36 in/year  
Showy, white flowers in spring or summer.



## PINK TRUMPET

*Handroanthus heptaphyllus*



More Info

Evergreen

15-25 x 30 feet

Medium Water Use

Full Sun

Grows ~12-24 in/year

Pink flowers in spring or summer.

## SILK TREE

*Albizia julibrissin*



More Info

Deciduous

20 x 35 feet

Medium Water Use

Partial Shade to Full Sun

Grows ~36 in/year

Pink or rose flowers in spring or summer.

## SWEET BAY

*Laurus nobilis*



More Info

Evergreen

15-30 x 40 feet

Medium Water Use

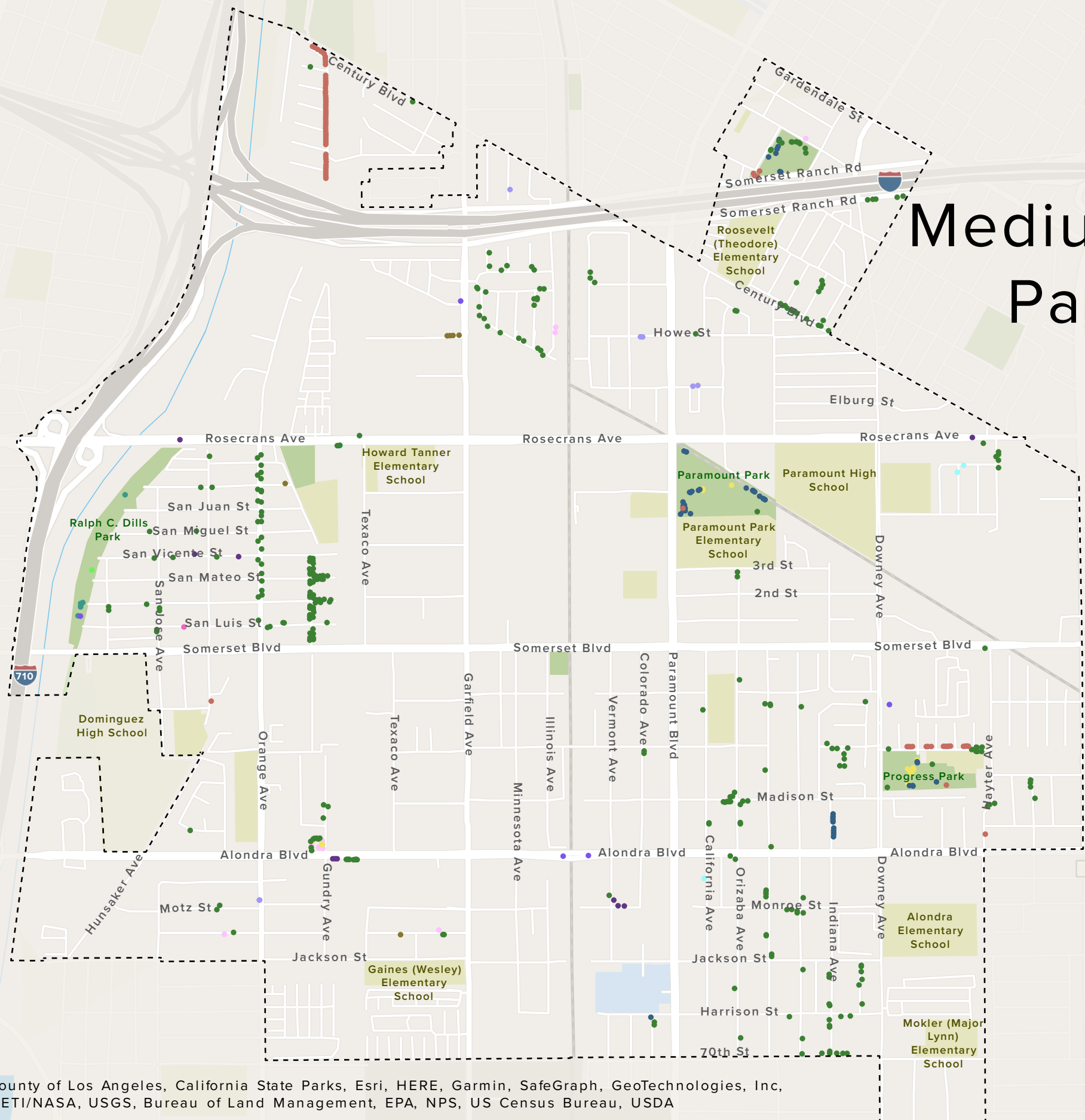
Partial Shade to Full Sun

Grows ~12-24 in/year

Green, white or yellow flowers in spring; leaves can be used in cooking.



# Medium Tree Species in Paramount Examples



### Legend

**Tree Species**

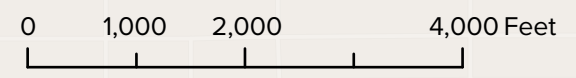
- AFGHAN PINE
- AUSTRALIAN WILLOW
- CALIFORNIA BAY
- CAROLINA LAUREL CHERRY
- CHINESE FLAME TREE
- CHINESE PISTACHE
- CORK OAK
- MESQUITE SPECIES
- OLIVE
- PEPPERMINT TREE
- PINK TRUMPET TREE
- SILK TREE
- SWEET BAY

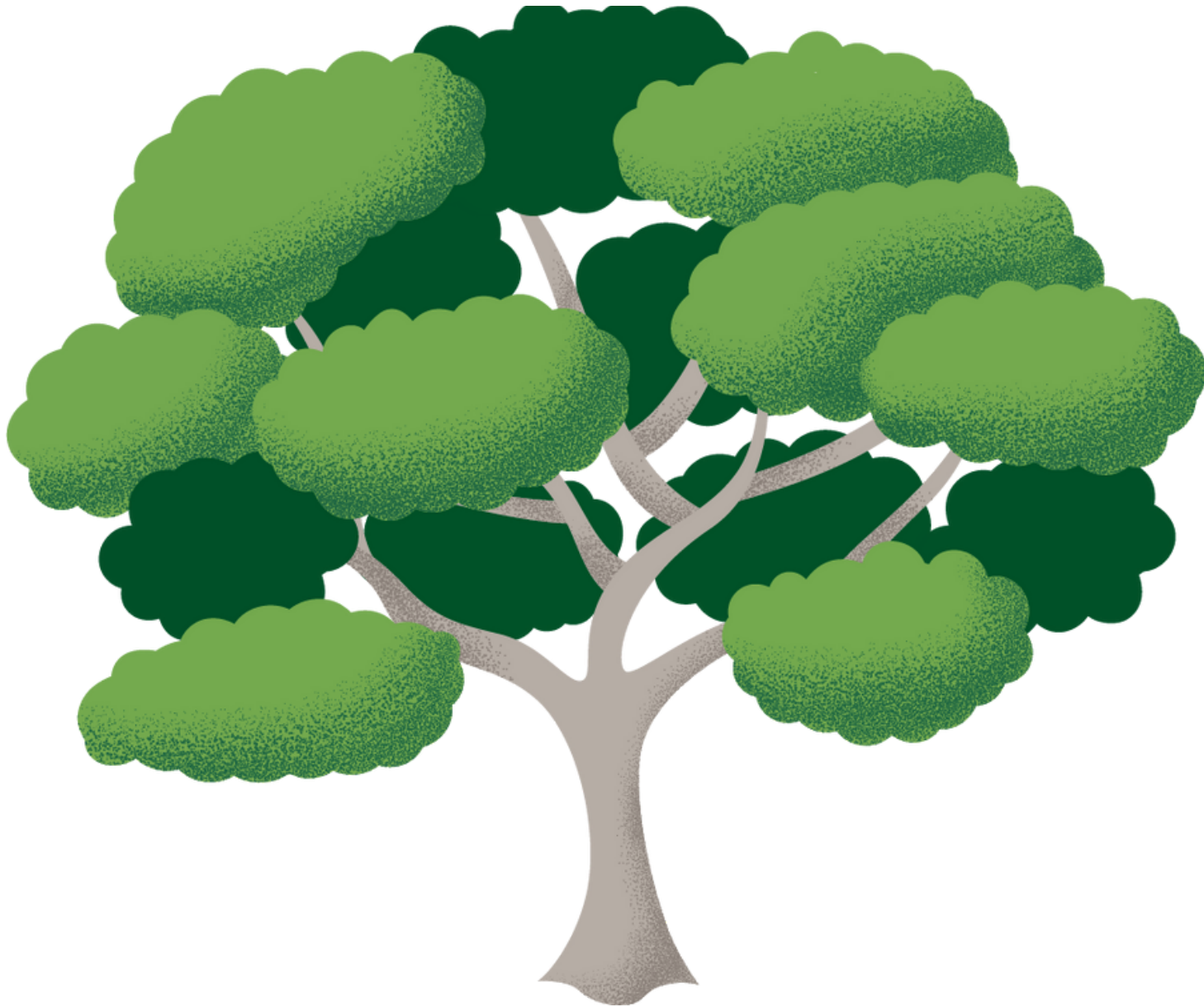
Paramount City Boundary

Paramount City Hall

Parks

Schools





# **Large Trees**

**Large trees provide abundant shade, establishing a cool and refreshing environment. With their substantial size, they create expansive canopies and offer ample shade for larger outdoor areas.**



## AFRICAN FERN PINE

*Afrocarpus falcatus*



More Info

Evergreen  
25-35 x 70 feet  
Medium Water Use  
Partial Shade to Full Sun  
Grows ~12-36 in/year  
Dense canopy, great for screens.

## ALEPPO PINE

*Pinus halepensis*



More Info

Evergreen  
20-40 x 60 feet  
Medium Water Use  
Partial Shade to Full Sun  
Grows ~24-36 in/year  
Long living pine, great for shade.

## BRISBANE BOX

*Lophostemon confertus*



More Info

Evergreen  
10-30 x 50 feet  
Medium Water Use  
Partial Shade to Full Sun  
Grows ~24-36 in/year  
White flowers in spring.

## CANARY ISLAND PINE

*Pinus canariensis*



More Info

Evergreen  
20-35 x 80 feet  
Medium Water Use  
Partial Shade to Full Sun  
Grows ~36 in/year  
Tall pine, with billowy dark-green boughs.

## COAST LIVE OAK

*Quercus agrifolia*



More Info

Evergreen  
20-70 x 70 feet  
Low Water Use  
Partial Shade to Full Sun  
Grows ~24 in/year  
Long living oak; large, spreading canopy.

## DEODAR CEDAR

*Cedrus deodara*



More Info

Evergreen  
20-30 x 60 feet  
Medium Water Use  
Partial Shade to Full Sun  
Grows ~36 in/year  
Inconspicuous flowers in fall.

## DRAKE CHINESE ELM

*Ulmus parvifolia 'Drake'*



More Info

Evergreen, partly Deciduous  
35-50 x 45 feet  
Medium Water Use  
Partial Shade to Full Sun  
Grows ~36 in/year  
Flowers in summer or fall.

## ITALIAN STONE PINE

*Pinus pinea*



More Info

Evergreen  
40-60 x 80 feet  
Medium Water Use  
Partial Shade to Full Sun  
Grows ~24-36 in/year  
Open, spreading shade tree.

## JACARANDA

*Jacaranda mimosifolia*



More Info

Deciduous  
15-30 x 50 feet  
Medium Water Use  
Full Sun  
Grows ~36 in/year  
Blue or lavender flowers in spring, summer or fall.

## TIPU TREE

*Tipuana tipu*



More Info

Deciduous  
25-50 x 50 feet  
Medium Water Use  
Partial Shade to Full Sun  
Grows ~24-36 in/year  
Orange or yellow flowers in summer.



## VALLEY OAK

*Quercus lobata*



More Info

Deciduous

50 x 70 feet

Medium Water Use

Partial Shade to Full Sun

Grows ~24-36 in/year

Thick furrowed bark, and produces sizable acorns.

## VIRGINIA OAK

*Quercus virginiana*



More Info

Evergreen

60-100 x 80 feet

Medium Water Use

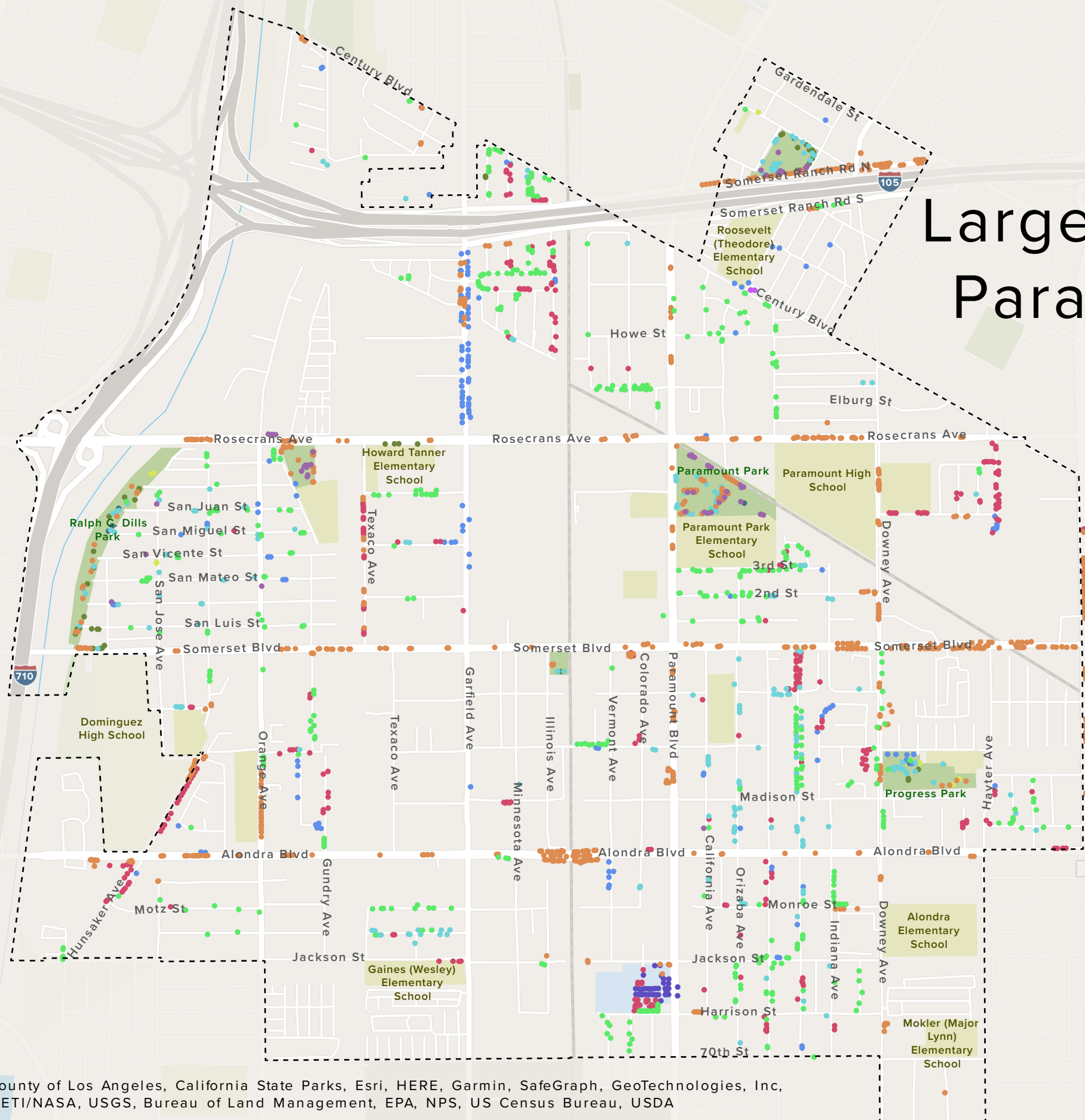
Partial Shade to Full Sun

Grows ~24-36 in/year

sprawling and wide-spreading canopy.



# Large Tree Species in Paramount Examples



### Legend

**Tree Species**

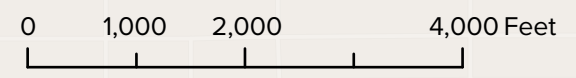
- AFRICAN FERN PINE
- ALEPPO PINE
- BRISBANE BOX
- CANARY ISLAND PINE
- CHINESE ELM
- COAST LIVE OAK
- DEODAR CEDAR
- ITALIAN STONE PINE
- JACARANDA
- TIPU
- VIRGINIA OAK

Paramount City Boundary

Paramount City Hall

Parks

Schools





# Fruit Trees

It is recommended to plant fruit trees in the winter or early spring, as this allows the trees to establish their roots before the summer heat sets in. When selecting a planting location, choose a spot that receives adequate sunlight and has well-draining soil. Regular watering is also important for healthy fruit tree growth, especially during the hot summer months.

Deciduous/Evergreen: Deciduous trees shed their leaves seasonally, while evergreen trees retain their leaves year-round.

Size: Canopy Width x Height indicates the typical size range of the tree when mature.

Water use: Describes the tree's water needs.

Sun: Specifies the amount of sunlight the tree prefers.

Growth Rate: Indicates the average growth rate of the tree per year.

Fruit-Bearing Season: Refers to the time of year when the tree produces fruit.

## APPLE

*Malus spp.*



More Info

Deciduous  
20-25 x 40 feet  
Medium Water Use  
Full Sun  
Grows ~24-36 in/year  
Fruit in Fall or Summer

## APRICOT

*Prunus armeniaca*



More Info

Deciduous  
10-20 x 30 feet  
Medium Water Use  
Full Sun  
Grows ~24 in/year  
Fruit in Spring or Summer

## AVOCADO

*Persea americana*



More Info

Evergreen  
25-35 x 40 feet  
Medium Water Use  
Partial Shade to Full Sun  
Grows ~24-36 in/year  
Fruit in Spring or Summer

## CHERRY PLUM

*Prunus cerasifera*



More Info

Deciduous  
15-20 x 25 feet  
Medium Water Use  
Full Sun  
Grows ~24-36 in/year  
Fruit in Summer

## COMMON FIG

*Ficus carica*



More Info

Deciduous  
10-20 x 30 feet  
Medium Water Use  
Partial Shade to Full Sun  
Grows ~36 in/year  
Fruit in Fall or Summer



## COMMON PLUM

*Prunus domestica*



More Info

Deciduous  
10-15 x 15 feet  
Medium Water Use  
Full Sun  
Grows ~24 in/year  
Fruit in Summer

## GUAVA

*Psidium guajava*



More Info

Evergreen  
20-25 x 25 feet  
Medium Water Use  
Partial Shade to Full Sun  
Grows ~24 in/year  
Fruit in Summer

## LEMON\*

*Citrus limon*



More Info

Evergreen  
5-10 x 25 feet  
Medium Water Use  
Full Sun  
Grows ~24 in/year  
Fruit in Fall, Winter, Spring or Summer

## LOQUAT

*Eriobotrya japonica*



More Info

Evergreen  
15-30 x 30 feet  
Medium Water use  
Partial Shade to Full Sun  
Grows ~36 in/year  
Fruit in Spring or Summer

## ORANGE\*

*Citrus sinensis*



More Info

Evergreen  
15-25 x 30 feet  
Medium Water Use  
Full Sun  
Grows ~24 in/year  
Fruit in Fall, Winter, Spring, or Summer

## PEACH

*Prunus persica*



More Info

Deciduous  
25 x 25 feet  
Medium Water Use  
Full Sun  
Grows ~36 in/year  
Fruit in Spring or Summer

## PEAR

*Pyrus calleryana*



More Info

Evergreen  
50 x 50 feet  
Medium Water Use  
Full Sun  
Grows ~24 in/year  
Fruit in Summer

## POMEGRANATE

*Punica granatum*



More Info

Evergreen  
15 x 15 feet  
Medium Water use  
Partial Shade to Full Sun  
Grows ~24 in/year  
Fruit in Fall

## TANGOR\*

*Citrus reticulata x sinensis*



Evergreen  
15-25 x 30 feet  
Medium Water Use  
Full Sun  
Grows ~24 in/year  
Fruit in Winter or Spring

\*As of 07/2023 there is an active quarantine for citrus species in Paramount. For more information and the latest updates visit the [Citrus Insider Page](#).



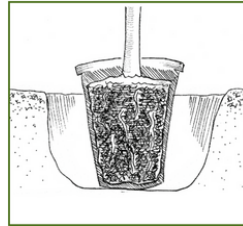
# How to Plant Your New Tree!

## Planting

### 1. Clear the area of weeds and grass.

### 2. Dig a hole.

Measure the height of the root ball (where the trunk meets the soil) and dig a hole as deep as the height of the root ball, and two to three times the width.

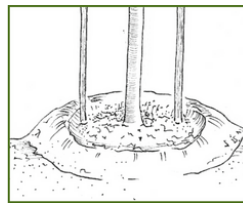


### 3. Place the tree.

Carefully remove the tree from the pot to avoid damaging the root ball. Place the tree in the hole and ensure that the top of the root ball is level or 1" above ground. Gently massage the roots.

### 4. Backfill around the root ball.

Tamp the soil as you backfill to eliminate air pockets. When backfilling is complete, the root ball should be at the level of the soil or 1" above ground.



### 5. Build a watering berm (a low ring of dirt around the tree).

Build the berm about 6 inches high, outside the root ball perimeter.



### 6. Water the tree.

Slowly water the tree with a hose or bucket. Give the tree 15-20 gallons of water.

### 7. Mulch (optional).

Place a 3-inch layer of mulch around the tree to help control weeds and prevent evaporation. Push the mulch 5-6 inches away from the base of the trunk, because the trunk will rot if covered.

## Tools

- Shovel
- Water (hose or bucket)
- Gloves (optional)
- Mulch (optional)
- Stakes and Ties (optional)



## Watering

Give your tree 10-15 gallons of water once a week to help your tree survive its first 3 years. Sprinklers are not enough! Check to see if the soil at a depth of 2-3 inches to see if it is dry. If it is, fill a 5-gallon bucket of water and gently pour into the tree berm 2-3 times.



## Staking

### 1. Remove nursery stake.

When the tree is large enough, remove the stake that is tied against the trunk. Fill the hole with soil.

### 2. Stake the tree if it cannot support itself.

Place larger stakes on the opposite sides of the tree. Ensure the stakes don't rub on any major branches. Pound stakes into the ground so they are sturdy. Use flexible ties to secure the tree to the stakes.