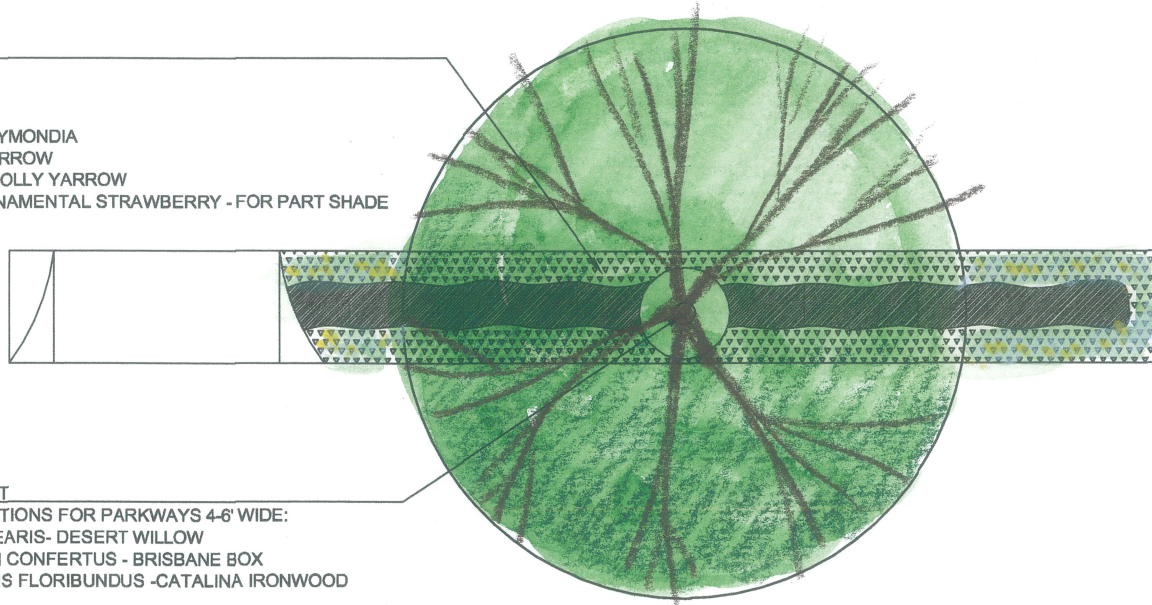


**DROUGHT TOLERANT
CITY OF LA APPROVED
LAWN ALTERNATIVE PLANT
SUGGESTIONS:**

- DYMONDIA MARGARETAE - DYMONDIA
- ACHILLEA MILLEFOLIUM - YARROW
- ACHILLEA TOMENTOSA - WOOLLY YARROW
- FRAGARIA CHILOENSIS - ORNAMENTAL STRAWBERRY - FOR PART SHADE



COMMUNITY STREET

TREE PLANTING OPTIONS FOR PARKWAYS 4-6' WIDE:

- CHILPOSI LINEARIS - DESERT WILLOW
- LOPHOSTEMON CONFERTUS - BRISBANE BOX
- LYONOTHAMNUS FLORIBUNDUS - CATALINA IRONWOOD

**DROUGHT TOLERANT
PARKWAY PLANTING**

SCALE: $\frac{1}{8}$ " = 1'-0"