

OPTIONS:

- ARCTOSTAPHYLOS MANZANITA 'DR. HURD'-  
MANZANITA 'DR. HURD'
- ARCTOSTAPHYLOS GLAUCA-  
BIGBERRY MANZANITA

OPTIONS ON BERM:

- ERIGERON GLAUCUS 'SEA BREEZE'-  
SEASIDE DAISY
- ARCTOSTAPHYLOS EDMUNDSII-  
LITTLE SUR MANZANITA

OVERFLOW DRAIN

OPTIONS:

- WESTRINGEA FRUITICOSA-  
COAST ROSEMARY
- RIBES MALVACEUM  
'DANCING TASSELS'-  
DANCING TASSELS  
CHAPARREL CURRANT

- LEYMUS CONDENSATUS  
'CANYON PRINCE'-  
CANYON PRINCE WILD RYE
- MUHLENBERGIA RIGENS-  
DEER GRASS
- FESTUCA IDAHOENSIS-  
MUSE MEADOW

- BUFFALO GRASS 'UC VERDE'  
OR  
BOUTELOUA GRACILIS-  
BLUE GRAMMA

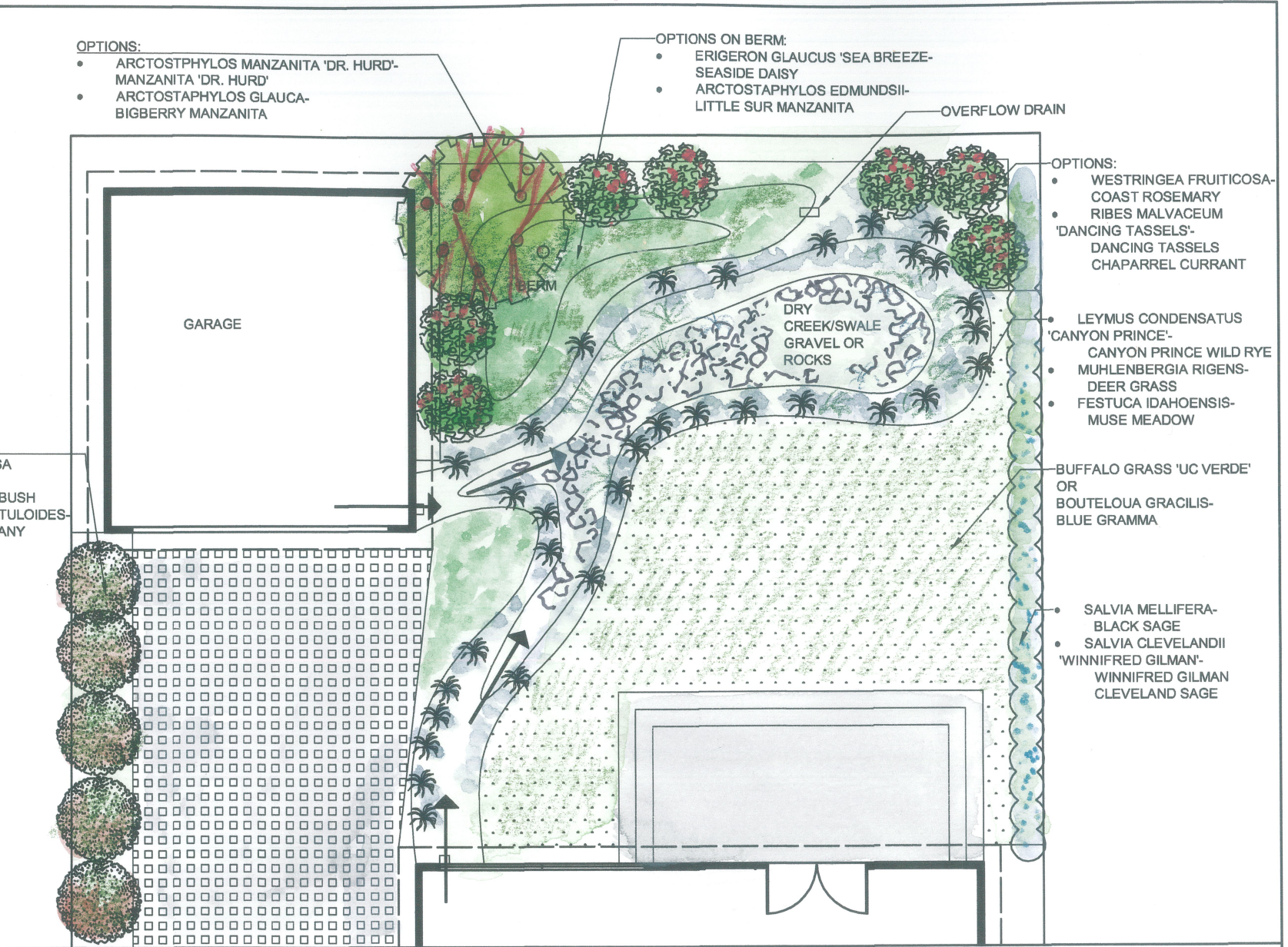
- SALVIA MELLIFERA-  
BLACK SAGE
- SALVIA CLEVELANDII  
'WINNIFRED GILMAN'-  
WINNIFRED GILMAN  
CLEVELAND SAGE

GARAGE

DRY  
CREEK/SWALE  
GRAVEL OR  
ROCKS

HEDGE OPTIONS:

- DODONAEA VISCOSA  
'PURPUREA'-  
PURPLE HOPSEED BUSH
- CERCOCARPUS BETULOIDES-  
MOUNTAIN MAHOGANY



BACKYARD SWALE,  
BERM AND DRY CREEK  
SYSTEM

SCALE: 1/8" = 1'-0"