

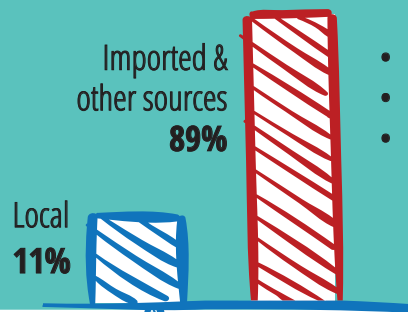
LA CAN BE WATER-RESILIENT

Implications of the Los Angeles Department of Water and Power's Stormwater Capture Master Plan



www.treepeople.org

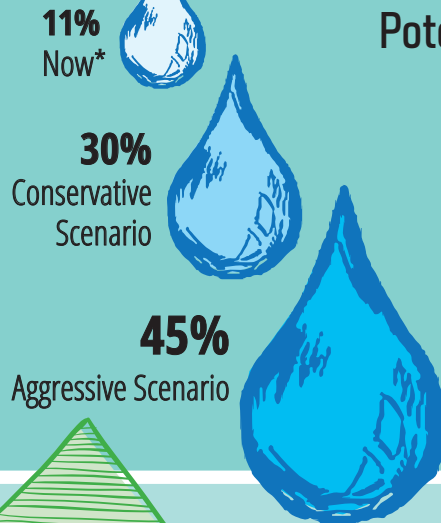
LA's water supply NOW



Costs & Risks

- Expensive
- Significant use of electricity
- Vulnerable to interruptions (natural disasters)
- Contributes to climate change emissions
- Damage to communities & ecosystems
- Not sustainable: existing supplies are threatened

LA's FUTURE water supply from local sources



Potential opportunity from Stormwater (through 2099)

The Conservative and Aggressive Scenarios can satisfy 30-45% of current demand!***

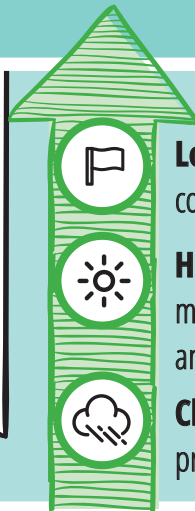
These percentages could increase if we implemented water-wise practices such as:

- Climate-appropriate landscapes
- Drought-smart irrigation
- Stormwater for appropriate indoor use and outdoor watering

*10% from groundwater; 1% from recycled water

** For more details visit our blog: <http://bit.ly/1M8Benp>

BENEFITS of growing LA's local water supply



Local reliability regardless of conditions of imported water sources

Healthier environment with a more beautiful, thriving ecosystem and strong local economy

Climate-resilience and flood protection



Less waste, by saving importation costs AND reduced polluted stormwater runoff



Lower emissions reducing LA's contribution to climate change



Decreased vulnerability from floods, droughts and other threats

TAKE ACTION to make LA more water-resilient



SUPPORT the adoption of the Stormwater Capture Master Plan and TreePeople's work to empower a drought-smart LA***



CONSERVE with climate-appropriate landscapes



HARVEST the rain from your roof in barrels or tanks



REPLENISH groundwater with rain gardens, trees and mulch

*** For updates follow us on Facebook

TreePeople's role in the Stormwater Capture Master Plan

As a result of a formal pro bono partnership with LADWP, TreePeople helped launch the Stormwater Capture Master Plan and continued to provide guidance as part of the core team throughout the process. To learn more about the Plan, visit www.ladwp.com/scmp.